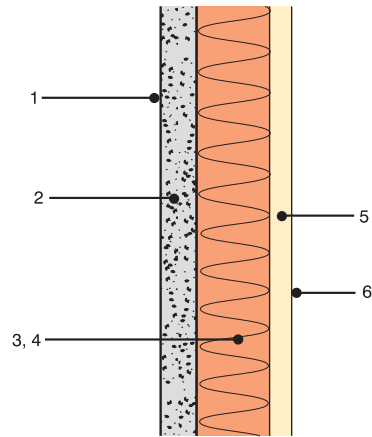


**WALLS** Poly-Tek - Enviro Panels - 'R' Ratings **LIGHTWEIGHT CLADDING** (Direct fixed to stud)



**Structure and Insulation Installation**

90mm timber stud, non vented airspace or Bulk insulation installed in cavity

10mm plasterboard lining

**NOTE:** Total R-values can be increased by substituting bulk insulation products of higher Material R-Value

| 'R' VALUES FOR POLY-TEK ENVIRO PANELS      | 110mm ENVIRO PANEL      |             |                      |            | 85mm ENVIRO PANEL       |            |                      |             |
|--|-------------------------|-------------|----------------------|------------|-------------------------|------------|----------------------|-------------|
|  | Without R2.5 Wall Batts |             | With R2.5 Wall Batts |            | Without R2.5 Wall Batts |            | With R2.5 Wall Batts |             |
| No. Element Description                    | WINTER                  | SUMMER      | WINTER               | SUMMER     | WINTER                  | SUMMER     | WINTER               | SUMMER      |
| 1 Outdoor Air Film                         | 0.040                   | 0.040       | 0.040                | 0.040      | 0.040                   | 0.040      | 0.040                | 0.040       |
| 2 Enviro Panel                             | 3.0                     | 2.7         | 3.0                  | 2.7        | 2.0                     | 1.83       | 2.0                  | 1.83        |
| 3 Unventilated Air Space                   | 0                       | 0           | 0                    | 0          | 0                       | 0          | 0                    | 0           |
| 4 Bulk Insulation Wall Batt                | 0                       | 0           | 2.631                | 2.381      | 0                       | 0          | 2.631                | 2.381       |
| 5 10mm Plasterboard                        | 0.059                   | 0.059       | 0.059                | 0.059      | 0.059                   | 0.059      | 0.059                | 0.059       |
| 6 Indoor Air-Film (Non-Reflective Surface) | 0.120                   | 0.120       | 0.120                | 0.120      | 0.120                   | 0.120      | 0.120                | 0.120       |
| <b>Total R-Value</b>                       | <b>3.22</b>             | <b>2.92</b> | <b>5.85</b>          | <b>5.3</b> | <b>2.22</b>             | <b>2.0</b> | <b>4.85</b>          | <b>4.43</b> |